



Quarterly Newsletter of STAR QUILTERS  
GUILD, Roanoke, Virginia  
Spring 2006

## Monthly Programs

May 1: 6:00 **Spring Social**. It's the Guild's 25<sup>th</sup> birthday party. Bring a covered dish. No Fat quarter exchange.

Jun 5: **Pat Sloan Trunk Show** with 60 quilts. Fat quarter exchange: Patriotic

July 10: **Christmas in July**. Demonstrations of Christmas projects by guild members. Fat quarter exchange: nature greens

Oct 2: **Ardko "Dream Quilts"**.

## Salem Fair is Coming

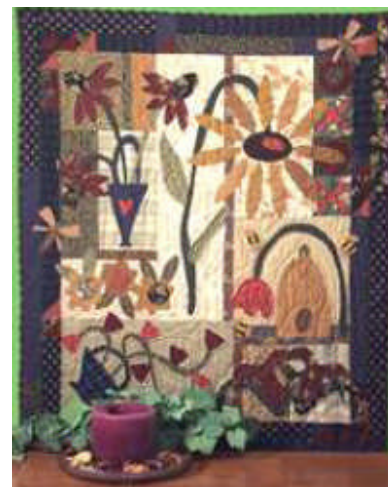
This old fashioned community fair runs from June 29- July 9. Amateur exhibitors of all ages are invited to enter items in farm products, horticulture, homemaking, handicrafts, photography and historical celebrations. Registration/Dropoff is Tuesday, June 28, 8-6 at Main lobby at the Salem Civic Center. Pick-up - Sunday, July 10, 12-6. It costs nothing to enter. More information: 540-375-4013, [www.salemfair.com](http://www.salemfair.com)

The fair is a great source of revenue for our guild. Each year Sallie Powers coordinates staffing the exhibit displays with people to watch over the exhibits. The fair pays the guild several \$ per hour for each person's presence. It's easy work: you get to sit down, chat with the visitors, and do some hand work. You can sign up for as little as an hour or two. Sallie hopes this year to completely staff the Needlework room and encourages you all to show your work there.

## Workshop: June 6, Pat's Wild and Free Appliqué

6 hours, \$25

Sign up and pay now; class size limited to 20. There are no cancellations, so if you cannot commit and pay, feel free to join the waiting list. After April meeting, registration will be opened up to non-guild members (price TBD).



From Pat Sloan's web site..."I love quilts that are very playful and free flowing. This class is about how I use asymmetrical designs, appliqué that is large, and lots of fabric. My focus for this class is on developing the background, with a concentration on fabric selection and placement. I also discuss the use of color and asymmetrical design elements, including shape and placement of the appliqué pieces. I also demonstrate how to make fabric look old by dying and bleaching it. The workshop offers students extensive one-on-one advice on color and fabric selection. I have several patterns in this style that you can choose from; Pomegranate Hill (book purchase required); Ma-Ma's Garden, or Slice of Summer (pattern included)."

Supply list provided (standard quilting supplies).

Sewing machine required.

[www.quiltershome.com](http://www.quiltershome.com)

## 2006 Officer Slate

|            |                  |                              |
|------------|------------------|------------------------------|
| President  | Don Bunce        | 890-2486                     |
| VP         | Judy McWhorter   | 774-1829 (h)<br>362-4721 (w) |
| Treasurer  | Sunni Swisher    | 982-6359                     |
| Secretary  | Donna Bowling    | 473-3725 (H)<br>961-6419 (W) |
| Programs   | Sallie Powers    | 389-3827                     |
| Membership | Jo Ellen Johnson | 473-3859                     |

## Member Spotlight: Mary Lou Lumsden



We all admire the wide array of projects Mary Lou shares each month during Show N' Tell. I thought you'd be as curious as me to know more about this terrific lady. To describe her in a single phrase, it has to be *Carpe Diem* - "seize the day". That core value imbues her whole life with vitality.

Her all consuming focus lately has been running. Marathon running. This lady who did a few 5k races back in her twenties ran a half marathon (13 miles) March 26 in Central Park, NYC. What made her decide to take on such a big challenge? She really enjoys the magazine More, targeted to mid-life women and their concerns. An issue announced this race and she decided to go for it. Yes, it's tough, but it gets harder each year - it could be now or never. So, since August, she's trained with a long run on Tuesdays, and shorter 3-6 mile runs on two other days in the week. It takes about an hour to do 6 miles.

As for needlework, she loves hand work. Silk ribbon embroidery, smocking, French hem sewing.. you name it; she loves it. She comes from a long line of Home Ec teachers and always sewed. Her first

quilt was a pillow for a 10<sup>th</sup> grade geometry project. The A++++ she received from the old maid teacher; and an inspiring 12<sup>th</sup> grade art teacher from NY started her off well. One final push was her grandmother Prillaman. Grandma gave away quilts like popcorn. She wasn't much for cooking or cleaning, but she turned out a lot of quilts. Each child in the family for High School graduation got a visit into her attic to choose a quilt from an inventory of a hundred. In her way, Mary Lou carries on that tradition, gifting each niece and nephew upon high school graduation with a quilt in colors of their choosing. Overall, she turns out 3 or 4 bed quilts and at least 4 or 5 smaller projects each year. Recently, her sewing includes more machine techniques. It leverages her creative urges in the limited time she has, and gives her nearly the same results without exhausting her aging eyes with 18-count cross stitch.

Mary Lou has always worked. One of her earlier career choices was as an insurance adjustor. It gave her great skills at negotiating that she's used her entire life. It was demanding, so she gave it up when children entered the picture. These days, as the final child is finishing up High School, she's working part time at Alpine Sewing Machine Co. She's usually the face greeting me there on Saturday when I need yet another spool of thread.

Another perennial part of her life is caring for older members of her family. Ever since 1981 there has been one or another relative with Alzheimer's or cancer. It's an exhausting responsibility no matter how willing you are. Fortunately, Mary Lou has a sister locally who shares the burden, and she's blessed with children and a husband who pretty much take care of themselves. She says nothing is so humbling as watching these diseases tear down a person. I can't help but think these experiences have contributed to her determination to live completely each and every day.

I'll leave you with her draft epitaphs.. "What we keep we lose, only what we give remains the same. Always keep moving. Don't let any grass grow under your feet and hold onto your bobbin and top threads at take off." Good counsel indeed for us all.



## Group BOM Quilt

Eleven "Strolling the Block" blocks were submitted at the March meeting; still missing I think April. Here are the less blurry pictures...



We're making a triple border but wonky like the blocks -- a crooked sidewalk with grass on either side and motifs like trees and tricycles overlaid. Sashing will be the "sidewalk" fabric; a neutral sand texture that will blend with all the blocks.

## July 15-16 2006 Guild Show

There's lots going on, and we always need more help.  
Key notes..

Venue: Roanoke Civic Center Exhibition Hall. Since the hotel won't guaranteed a specific room or even specific dates, we moved the show. We are all getting wiser about the myriad add-on fees of using the civic center... fire marshalls, security guards, electrical outlets.

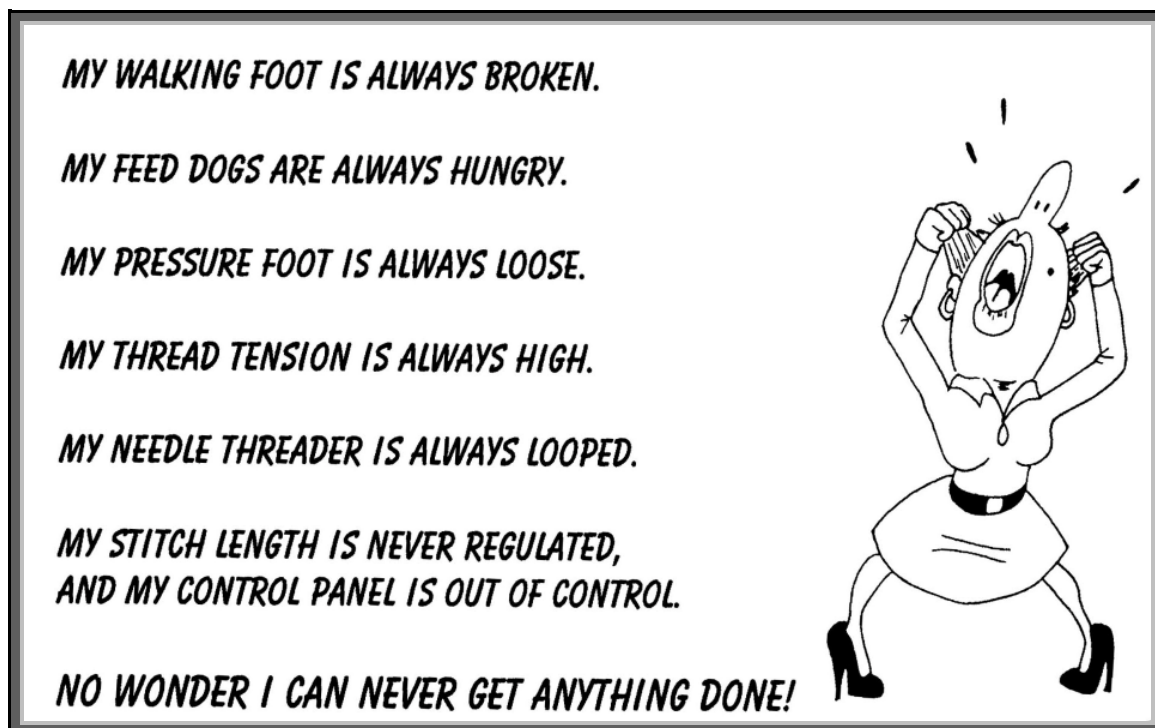
The show will have a higher base cost, but there will be much more space. We're hoping for at least 10 vendors and several hundred quilts.



Contact: Co-Chairs - Don Bunce and Peggy Ramsey  
Entry Registration - Susan Kraterfield  
Members' Boutique - Sunni Swisher  
Vendor rental - Don Bunce  
Publicity - Gayla Heath

Website: <http://members.cox.net/starquilters>. This web page has links for the entry form and the entry rules. If you are without internet, pick up the forms at a guild meeting or contact Susan to have her mail you one.

Rule changes: Wearables and other "not flat" creations are welcomed this year. Entry is open to anyone; for a fee. No rule about who constructed the entry or professional/amateur status.





## Show n' Tell







## Out of Town Calendar Notes

Just highlights included; visit <http://vcq.org/calendar.htm> for more.

|   |   |
|---|---|
| <b>Apr 15-May14</b><br>M-F 10-8;<br>Sat 10-5;<br>Sun 1-4  | <b>Quilted Fairie Tales Show</b> at Quilting Adventures, Dumbarton Square Shopping Center, 7121 Staples Mill Road, <b>Richmond, VA</b> 23228. 804-262-0005. Free, open to the public.   |
| <b>Apr 20-22</b><br>Thur-Fri 10-8<br>Sat 10-4   | <b>Faithful Circle Guild 'Pieces of Our Lives'</b> . Over 200 quilts, hand-quilted raffle quilt, vendors, demonstrations, peddler's table, silent auction, appraisals by appointment, door prizes. First Presbyterian Church of Howard County, 9325 Presbyterian Circle <b>Columbia, MD</b> 21042. Contacts: <a href="http://www.faithfulcirclequilters.com">www.faithfulcirclequilters.com</a> , Joan Groves <a href="mailto:carapacedg@aol.com">carapacedg@aol.com</a> 12107 Dusk View Ct. Clarksville, MD 21029, Peg McClelland 410- <a href="mailto:Ppmc9877@aol.com">Ppmc9877@aol.com</a> 9877 Century DriveEllicott City, MD 21042<br>\$5 admission |
| <b>Apr 21-23</b><br>Fri 12-8<br>Sat 10- 6<br>Sun 10-5   | <b>Forever Friends Quilt Show 2006</b> , Montgomery County Fairgrounds, Home Arts Building, 16 Chestnut Street, <b>Gaithersburg, MD</b> 20877. Exhibits, classes, silent auction, merchant mall, members' boutique, opportunity quilt, raffles, children's activities. Contact: <a href="http://www.friendshipstar.org">http://www.friendshipstar.org</a> , Martha White 301-946-6438<br>Adult one day \$6, 3-days \$12, Seniors \$4/\$8, Students (age 12-18) \$3/\$6 and children under 12 free.  |
| <b>Apr 26-30</b>  | <b>THE NORTHERN SHENANDOAH VALLEY QUILT &amp; NEEDLEWORK SHOW</b><br>"When Life Gives You Scraps, Make a Quilt", Clarke County Parks & Recreation building off Business Rt. 7 in <b>Clarke County, VA</b> 22611   |
| <b>April 27-30</b>  | <b>Celebration 2006</b> , a <b>Star Studded Event</b> , <b>Smith Mountain Lake 4-H</b> Conference Center. For complete brochure: <a href="http://vcq.org/PDFfiles/Brochure_Celebration%202006.pdf">http://vcq.org/PDFfiles/Brochure_Celebration%202006.pdf</a>  |
| <b>June 2-4</b>   | <b>33rd annual Quilters Unlimited Quilt Show</b> , Dulles Expo Center in <b>Chantilly, VA</b> . Non-juried show hanging about 600 quilts, dolls and wearables, features about 75 vendors, and will offer lectures Thursday evening, followed by three full days of classes. Classes listing and registration form are listed on the website <a href="http://www.quiltersunlimited.org">http://www.quiltersunlimited.org</a>   |
| <b>June 10-11</b>   | <b>Quilts by the Bay</b> - The annual quilt show presented by the Annapolis Quilt Guild, <b>Annapolis Md</b> . Vendors, demonstrations on the hour and half hour, silent auction, boutique, and a room full of wonderful quilts. See <a href="http://www.annapolisquiltguild.org">http://www.annapolisquiltguild.org</a> for more information.  |
| <b>June 16-18</b><br>Thur, June 15:<br>"Preview<br>Night" 4.30-6<br>Jun 16: 10- 6<br>Jun 17: 10-6<br>Jun 18: 11-3 | <b>BLUE RIDGE QUILT FESTIVAL</b> , New Blacksburg Middle School, 3109 Prices Fork Road, <b>Blacksburg, VA</b> 24060. Workshops,Hoffman & Keepsake Quilting Challenge exhibits. Judy Simmons: "Fairfield Fashion Show Garments and Quilts". Quilts and Wearables, "Viewers Choice" Contest, Appraisals, Workshops and Lectures, Vendors, Lunch will be served.<br><br>For show brochure please send long SASE to: Blue Ridge Quilt Festival, Karin Tauber, PO Box 11151, Blacksburg, VA 24062, <a href="mailto:BRQFestival@aol.com">BRQFestival@aol.com</a> , <a href="http://www.BRQFestival.com">http://www.BRQFestival.com</a>                          |
| <b>June 24-25</b><br>Sat 10-5<br>Sun 12-5   | The Shenandoah Valley Quilters Guild will present <b>Quilts in the Valley X</b> , Turner Ashby High School, 800 N. Main Street (Route 42), between Dayton and <b>Bridgewater, VA</b> . Call 540-477-9514 for additional information. Quilts to view, door prizes and vendors.   |

## Ongoing Activities & Reference

|                                  |  |
|----------------------------------|--|
| 6:00 Project Group               | "Lessons from Mama" project book. Each person making their own quilt. Group chaired by Donna Bowling.  |
| Guild Photos on Snapfish         | Historian Denise Lloyd can share our guild photos with you when you sign up for snapfish on the internet. She started with the guild directory emails; but if you got missed, let her ( <a href="mailto:dandmlloyd@juno.com">dandmlloyd@juno.com</a> ) know your address so she can "invite" you to share in the pictures. |
| Denim shirts and totes           | Displaying the Star Quilters logo. Denim Shirts—\$20, Totes—\$17. Available each meeting from Sallie Powers.   |
| Fons & Porter's Love of Quilting | Subscribe to Fons & Porter's magazine and support the guild with one stroke. Your cost is \$20 and the guild will receive a rebate. This great magazine is loaded with quilting tips and great patterns. See Sallie Powers for more information.   |
| Bring a little Sunshine..        | Let secretary Donna Bowling know when someone is sick or in need of a card.  |
| Newsletter Ads                   | Any member can sell ads; have the check made out to Star Quilters Guild and get the ad image to Newsletter editor 10 days before the meeting in Jan, Apr, July, and Oct. Ad may be on paper or emailed. Single issue rates: \$5 business card, \$15/\$25/\$35 for quarter/half/full page.                                  |
| Monthly meeting schedule         | First Monday of every month at 7 PM. Exceptions: Jan, July, and Sept meetings are held on the 2 <sup>nd</sup> Monday. New format: (1) program, (2) business meeting, (3) show and tell   |
| Board Meeting Schedule           | 6:00PM on the 3 <sup>rd</sup> Monday in Feb, May, Aug, and Nov.  |

Star Quilters, c/o Susan Kraterfield  
2552 Inglewood Rd.  
Roanoke, VA 24015