



May 2010 Newsletter

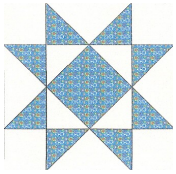
www.starquilters.org

Upcoming Meetings

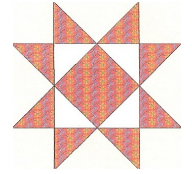
May 3—Spring Social. 6:00 PM. Bring a covered dish to share. Remember to bring a spoon to serve your dish. There will be lots of food, fun and friendship.

June 7—Neva Hart will present “War & Pieces”, for the soldiers in the field or citizen soldiers who declared the moral equivalent of war, quilts have been used throughout American History as comfort and to further the cause.

Oh My Stars—We’re 30!!!



Planning for the 2011 Quilt Show has begun!!! The Raffle Quilt will be made using 30’s fabrics from a pattern entitled “Oh My Stars.” It is a perfect match for the Star Quilters Guild. The plan is to have kits for blocks ready for



members to pick up. The blocks can be machine or hand pieced. We need members who enjoy hand appliqué to help with the appliqué once the blocks are together. We then hope to hand quilt the quilt. Contact Kathy Wickham, Victoria Person or Susan Butler if you would like to help with this project.

Bus Trip to the West Virginia Quilters, Inc. Quilt Festival Saturday, June 26, 2010

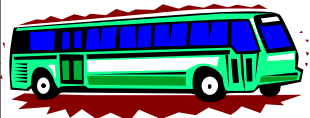
You are invited to join the Star Quilters Guild on a bus trip to the West Virginia Quilters, Inc. Quilt Festival. There will be 100+ quilts, exhibits, vendor and demonstrations. The raffle quilt is a 1930’s Round Robin made by quilters from guilds across West Virginia. You can find more information at www.wvquilters.org.

The date is Saturday, June 26, 2010. We will depart from the Bonsack Wal-Mart. The departure time will be announced at a later date (probably around 7:00 AM). We hope to return near suppertime.

The Quilt Festival is at the Summersville Arena and Conference Center. It may be possible that we can stop at Tamarack. Tamarack: *The Best of West Virginia* is the nation’s first showcase of handcrafts, fine art and regional cuisine. It comprises a warmly decorated retail store, working studios for resident artisans, a fine art gallery, a theater, and *A Taste of West Virginia* food court, managed by The Greenbrier Resort.

The cost will be \$25.00 per person which includes the \$6.00 admission to the Quilt Festival and the bus fare.

Please sign up as soon as possible. We would like at least 30 members to sign up and pay to reserve the bus. Susan Butler will be collecting names and fees at the May meeting. If you won’t be at the May meeting you can contact Susan Butler, Kathy Wickham or Victoria Person.



If you enjoyed the last bus trip, this should be another great time. If you missed that bus trip, please join us for a wonderful day of fun and fellowship.

Dear Jane Group

The Dear Jane Group meets the 3rd Monday of each month at St. John Lutheran at 7:00 PM.

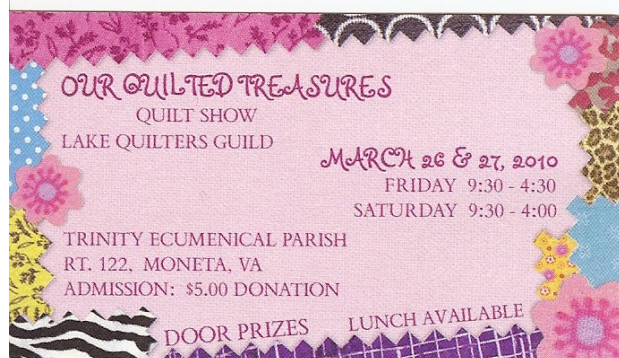
This has evolved to any type of hand-piecing and all hand-piecers or wanna be hand-piecers are invited. It is a great time of fun, fellowship and help from other members. Bring your own supplies. Of course we all will be glad to share if you forget to bring something.

For more information contact: Sallie Powers or Linda Greene.

Make a Pillowcase, Make a Difference

Join us along with The American Patchwork & Quilting One Million Pillowcase Challenge. Let's show our community how caring quilters can be. We can donate to shelters, nursing homes, children's charities and more. Pillowcases can be turned in at Creative Quilting and Judy will go on line and add the number of pillowcases donated to the rolling counter. An update will be given at the Guild meetings.

Creative Quilting has a pillowcase pattern. You can go to: www.Allpeoplequilt.com and download a pattern. Let's see how many pillowcases the Star Quilters Guild can make. You can bring finished pillowcases to the Guild meetings or to Creative Quilting.



Membership Matters

2010 – 2011 Dues Still Being Collected

Some members still need to pay their dues for the period May 1, 2010 – April 30, 2011. If you have not already paid, please pay before our social, May 3. Sue wants to collect all members' dues before turning over Membership to the new Membership Chairperson.

2010-11 Officers and Chairpersons

President—Linda Greene
 Vice President—Judy McWhorter
 Treasurer—Claire Hightower
 Recording Secretary—Vicki Kuhlman
 Corresponding Sec/Parliamentarian – Joyce Noell
 Sunshine Committee – Natalie McMahon
 Program Committee – Pat Lingle, Janet Lemons & Gayla Heath
 Membership Committee – Margaret Tomasik, Linda Motley, Sue Bainter
 Ways & Means Committee – Shirley Foutz & Shirley Meador
 Comfort Quilts – Ethel Simmons, Judy Bradley & Ruth Bunt
 Newsletter – Linda Greene
 Librarian – Chris Epperley
 Webmaster/Publicity – Susan Kraterfield
 Hospitality Committee – Ginny Vaden, Ann Ware & Laura Turnbull
 Special Events Committee – Victoria Person, Kathy Wickham & Susan Butler
 Historian – Suzette Hile & Connie Davis



Newsletter Ads

Support our local quilt shops and our advertisers.

If you would like to place an ad for your quilting/sewing related business in our Newsletter, contact Linda Greene.


The cost to place your ad in the Star Quilters Guild Newsletters is \$20.00 per year for a business card size. This is a great way to advertise your business.

Comfort Quilts

Wanted: Fabric Angels - We would like to make May military month and in September we will be focusing on kid fabric. We are asking our members to bring in fabric for our Wounded Soldier Quilts. For those of you who have not been able to sew a wounded soldier quilt, here is your chance to be part of this important outreach program of our Guild. For each kit we need 1 yard light, 1 yard dark and 4 yards that will be used for the backing and binding. We have been making red, white and blue quilts, but have added browns, greens, creams and beiges. Floral fabrics will not work in our quilts.

Your halo would even be larger, if you could cut the 1 yard cuts into 6" squares. We will be collecting the fabric at our May Social. You are always welcome to bring your fabric in at anytime.

Thank you, Judy, Ethel and Ruth



Mary Lou Lumsden
Mary Lou's Custom Designs

Specializes in Quilt Labels
 Monograms
 Custom Draperies and Curtains

(540) 521-4822 cell
 (540) 774-4836 home
lumsdenmary@yahoo.com

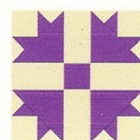
Show and Tell

Each meeting we have Show and Tell. This is the time members bring in what they have been working on to show the group. Everyone is invited to bring in their handwork to share. We also invite guests to bring their work. We love seeing what our friends have been up to.

Some members say the meetings fall after they have finished a quilt as a gift to someone. If you are working on a quilt and will be giving it away before you can show the finished quilt, bring in the quilt top to share. We would love to see it!!!!

News from the Library

Each time you check out a book from the Library, you need to put your name in the fat quarter drawing. If the thousands of free quilt patterns available in the books aren't enough to entice you to check out books from our library, maybe the chance to win a fat quarter will!!!!



Star City Stitchery
 Longarm Quilting Service

Gammill with Statler Stitcher
 Edge-2-Edge and Custom Designs
www.StarCityStitchery.com

Laura Turnbull 540-819-6549



Eagle Ridge Quilting
 Longarm Quilting with Statler Stitcher
 Arlene Wright
 Custom and all over designs

By appointment only
 5100 Rich Patch Road
 Covington, VA 24426

540-747-4781

eagleridgequilting@gmail.com

Blue Ridge Quilt Festival

June 18-20, 2010, New Blacksburg Middle School
3109 Prices Fork Road, Blacksburg, VA 24060

Extensive Vendor Mall, Quilts, Wearables, Art Quilts, Kaleidoscope Quilts, Appraisals on Saturday, Vendor Sponsored Awards, Views Choice, Door Prizes.

Workshops with Linda Fiedler, Paula Golden, Ellen Guerrant, Didi Salvatierra, Susan Brittingham and Kathy Sevebeck. Admission: \$5.00 For more information: www.BRQFestival.com

Barefoot Quiltessas

The Barefoot Quiltessas meet the 1st Friday of each month at Our Lady of Nazareth Church, 2505 Electric Road, SW, in Roanoke They meet from 10:00 AM-3:00 PM. Bring your lunch and join in for fun and hands-on learning. For more information contact: Gayla Heath or Judy Bradley.

Newsletter Information

For members who have email, the Newsletter will be emailed to you. If you are a member and you do not receive the Newsletter by email, please see Linda Greene to be added to the email list.

For member s who do not have email, a Newsletter will be waiting for you at the Treasurer/ Membership table. When you sign in, please remember to pick up your Newsletter. This will save the Guild the money it costs to mail them.

Additional copies of the Newsletter are available for visitors and guests.

The deadline for Newsletter articles is the 15th of each month. Committee chairs are asked to submit information on their committees for each Newsletter, if possible. We need to keep members up to date on what is happening in the Guild.

How to Make a Big Board

Materials:

1 piece of lauan—24" x 60" - a thin piece of plywood-like board but it's much lighter in weight than plywood. The home improvement stores will cut a 4' x 8' sheet for you and you'll have some left over.

Approximately 6'-9' of 1" x 2" pieces of lumber. A little will be left over.

Nails

Wood Glue

Staple Gun

Cotton Batting

Cotton Fabric (enough to cover board)

Lay the piece of lauan on the floor and turn your ironing board over on top of it. Center the ironing board on the wood and trace around the ironing board top.

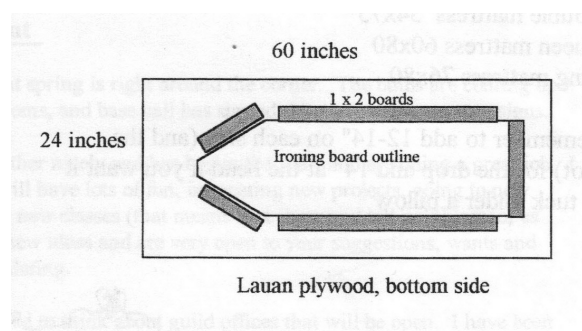
Cut the 1" x 2" boards to length that fit around the outline of your board.

Glue and then nail the 1" x 2" to the bottom of the side of the lauan. Use short nails so none come through the top.

Stretch two layers of cotton batting over the top of the board. Staple the edge of the batting to the underside of the lauan. Check for staple ends on top of the board.

Stretch the cotton fabric over the batting and staple it edges to the underside of the board.

The board will be lightweight and should fit easily on the top of your ironing board.



IMPORTANT REMINDERS

May Social

Monday, May 3, 2010, is the May Social. The time to be there is **6:00 PM**. Remember to bring a dish to share. If you need a serving spoon, please remember to bring one with you. Also, you might want to put your name on the bottom of your dish or pan just in case you forget to pick it up before you leave.

Star Quilters Guild Go Green Challenge

Remember to bring your Go Green Challenge Quilt to the May Social.

Star Quilters Guild Membership Dues

The May Social is a great time to renew your membership with the Star Quilters Guild. Don't be left out, join now!!!!!!!